

Click Tif HD- PC & PCNL

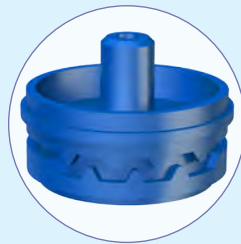


Features & Benefits



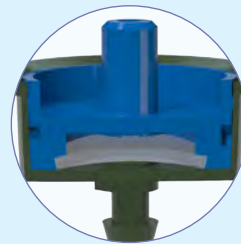
Factory Sealed, Pressure Compensating Emitter

Available with two options,
 - Basic Pressure Compensating, PC, (Green housing),
 - Pressure Compensating Non-Leakage, PCNL (Grey housing).



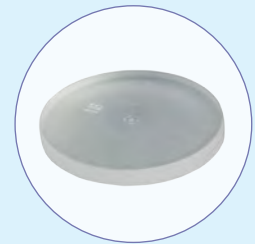
Clog Resistant, Wide Labyrinth

Strong turbulent flow in the labyrinth helps for continual flushing and cleaning.



Dynamic Self Cleaning Mechanism

Dynamic movement of diaphragm retracts dynamically to throw away particles which are blocking the emitter.



Precision Pressure Compensation

High quality injection moulded liquid silicone diaphragm ensures precision in pressure compensation helps to maintain high discharge uniformity.



Barbed Inlet with Narrow Inlet Filter

Barbed inlet suitable to connect directly on 4mm extension tube or can be installed on Polytube. Precision inlet filters prevents entrance of most of the impurities.



Extended Outlet

Available in two options,
 - Barbed outlet - For connection of 3 mm ID extension tubing for right placement of water.
 - Tapered outlet - For connection of multi outlet connectors or anti-bug cap.



Wide Pressure Compensating Range

Pressure regulation range 0.5 - 4 kg/cm² pressure (7.11 to 56.88psi)



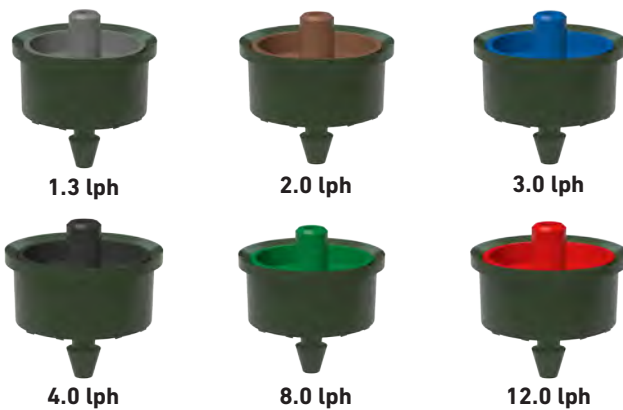
Optional Anti-bug Cap

Prevents entry of ants/bugs inside the emitter.

Click Tif - PC & PCNL

Additional Features

- **No Environmental and Chemical Effects** : UV stabilised does not have any environmental effects. Resistant to chemicals used in agriculture.
- **Assured Quality** : Conforming to Indian Standard IS13487 and International Standard ISO 9260.
- **Excellent CVm, Manufacturer's Coefficient of Variation:** Manufacturing coefficient of variation, $CVm \leq 4\%$ ensures high field emission uniformity.
- **Color Coded Cap** : Color coded cap facilitates easy identification of emitter flow rate.



Applications

- For orchards, vineyards, greenhouses, nurseries and landscape.
- For pulse irrigation and irrigation in soilless conditions
- Prevents surplus drainage in low places (PCNL model)
- For areas with harsh topographical conditions.
- Subsurface installation protects dripper from animal damage
- For irrigation of pot-plants with single, two, four or multiple outlets.

Operating Specifications

- Maintain the operating pressure within the pressure regulating range.
- While using PCNL model, make sure that static pressure at the dripper shall not be more than closing pressure i.e. 0.3 kg/cm².
- Shall be used with "Lateral Leakage Prevention Device (LLPD)" for static head more than closing pressure.
- Filtration recommendation 130 micron or less. Actual quality of filtration can be decided by quality of source water.
- For multiple outlets through single dripper, use multioutlet connector alongwith stake dripper.
- Please refer to our "Maintenance Manual" for more details.

Specifications

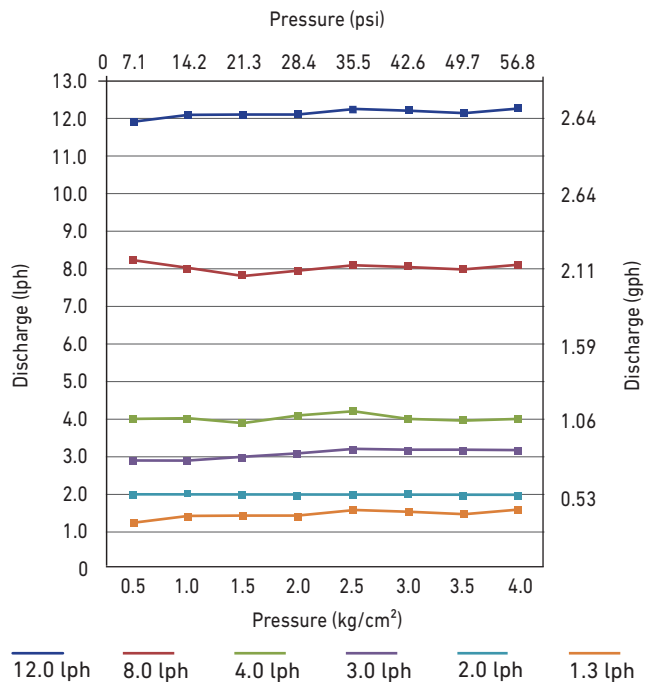
Discharge		Color of cover	Emitter exponent (x)	Flow coefficient (k)	Range of pressure regulation, kg/cm ²
(lph)	(gph)				
1.3	0.34	Grey	0.04	1.3	0.5 - 4.0
2.0	0.5	Brown	0.03	2.0	0.5 - 4.0
3.0	0.8	Blue	0.03	3.0	0.5 - 4.0
4.0	1.0	Black	0.04	4.0	0.5 - 4.0
8.0	2.1	Green	0.04	8.0	0.5 - 4.0
12.0	3.1	Red	0.04	12.0	0.5 - 4.0

Flow equation $q = kH^x$, $q =$ Discharge, lph, $H =$ Pressure head, kg/cm², $k =$ Flow coefficient, $x =$ Emitter exponent.

Note: Color of housing: Green - For PC option, Grey - For PCNL option

- For Click Tif - PCNL model
Opening Pressure - 0.8 kg/cm²
Closing Pressure - 0.3 kg/cm²
- Recommended punch size - 2.5 mm (Code- ITC)

Performance Graph



Note: Tested under standard test conditions.

Ordering Specifications

Taper lock		Barb outlet 3/5		Body color	Flow rate lph
PC Green housing	PC CNL Grey housing	PC Green housing	PC CNL Grey housing		
CTPC13T	CTNL13T	CTPC13B	CTNL13B	Grey	1.3
CTPC20T	CTNL20T	CTPC20B	CTNL20B	Brown	2
CTPC30T	CTNL30T	CTPC30B	CTNL30B	Blue	3
CTPC40T	CTNL40T	CTPC40B	CTNL40B	Black	4
CTPC80T	CTNL80T	CTPC80B	CTNL80B	Green	8
CTPC12T	CTNL12T	CTPC12B	CTNL12B	Red	12

Click Tif® HD



12 mm tube (10.2 mm ID tube)

Dripper Spacing	20 cm	40 cm	50 cm	60 cm	75 cm	90 cm	100 cm	120 cm	150 cm	180 cm	200 cm	250 cm	300 cm	
Slope, %	Length (m)													
1.3 lph														
2	1.0	51.4	79.2	92.5	103.8	119.3	132.3	140.0	153.6	169.5	183.6	192.0	207.5	222.0
	1.5	64.8	101.2	119.0	134.4	156.0	175.5	186.0	206.4	232.5	253.8	268.0	297.5	324.0
	2.0	74.4	116.8	138.0	156.0	182.3	206.1	219.0	243.6	276.0	304.2	322.0	362.5	396.0
	2.5	82.0	129.2	153.0	174.0	203.3	230.4	245.0	273.6	310.5	343.8	366.0	412.5	453.0
	3.0	88.6	140.0	166.0	188.4	221.3	250.2	267.0	298.8	339.0	376.2	402.0	417.5	462.0
	3.5	94.4	149.2	177.0	201.6	236.3	268.2	286.0	320.4	364.5	405.0	432.0	450.0	498.0
	4.0	99.4	157.6	187.0	213.0	250.5	283.5	303.0	339.6	387.0	432.0	460.0	480.0	531.0
0	1.0	54.8	88.0	105.0	120.0	142.5	162.9	174.0	196.8	228.0	257.4	276.0	320.0	360.0
	1.5	67.6	108.4	129.5	148.2	175.5	200.7	215.0	243.6	280.5	316.8	340.0	392.5	441.0
	2.0	76.8	123.2	147.5	168.6	200.3	228.6	245.0	277.2	319.5	360.0	388.0	447.5	504.0
	2.5	84.4	135.2	162.0	184.8	219.8	251.1	268.0	303.6	351.0	394.2	424.0	490.0	552.0
	3.0	90.8	145.6	174.0	199.2	236.3	270.0	289.0	326.4	378.0	424.8	458.0	477.5	537.0
	3.5	96.4	154.8	185.0	211.2	250.5	286.2	307.0	346.8	400.5	451.8	486.0	507.5	570.0
	4.0	101.4	162.8	194.5	222.6	264.0	301.5	323.0	364.8	421.5	475.2	510.0	535.0	600.0
-2	1.0	58.4	97.2	118.0	137.4	166.5	194.4	210.0	242.4	288.0	333.0	364.0	437.5	507.0
	1.5	70.6	116.0	140.5	162.0	195.8	226.8	245.0	280.8	331.5	379.8	414.0	492.5	567.0
	2.0	79.4	130.0	157.0	181.2	217.5	251.1	271.0	309.6	364.5	415.8	452.0	535.0	615.0
	2.5	86.8	141.6	170.5	196.2	235.5	271.8	292.0	334.8	391.5	446.4	484.0	570.0	654.0
	3.0	93.0	151.2	182.0	209.4	251.3	288.9	311.0	355.2	415.5	473.4	514.0	540.0	615.0
	3.5	98.4	160.0	192.5	221.4	264.8	305.1	328.0	374.4	436.5	496.8	538.0	565.0	645.0
	4.0	103.4	168.0	202.0	232.2	277.5	318.6	343.0	391.2	456.0	518.4	562.0	590.0	672.0
2 lph														
2	1.0	39.4	61.2	72.0	81.0	94.5	105.3	112.0	123.6	138.0	151.2	160.0	175.0	189.0
	1.5	49.4	77.6	92.0	103.8	121.5	136.8	146.0	162.0	184.5	203.4	216.0	242.5	264.0
	2.0	56.6	89.2	106.0	120.0	141.0	159.3	170.0	189.6	216.0	239.4	256.0	287.5	318.0
	2.5	62.4	98.8	117.0	133.2	156.8	177.3	189.0	212.4	241.5	268.2	286.0	325.0	360.0
	3.0	67.4	106.8	127.0	144.0	169.5	192.6	205.0	230.4	264.0	293.4	314.0	325.0	363.0
	3.5	71.6	113.6	135.0	154.2	181.5	206.1	220.0	246.0	282.0	315.0	336.0	350.0	390.0
	4.0	75.4	120.0	142.5	162.6	191.3	217.8	232.0	260.4	298.5	333.0	356.0	372.5	414.0
0	1.0	41.4	66.4	79.5	90.6	108.0	123.3	132.0	148.8	172.5	192.6	208.0	240.0	270.0
	1.5	51.0	82.0	98.0	112.2	132.8	151.2	162.0	183.6	211.5	239.4	256.0	297.5	333.0
	2.0	58.0	93.2	111.5	127.2	150.8	172.8	185.0	208.8	241.5	271.8	292.0	337.5	381.0
	2.5	63.8	102.4	122.0	139.8	165.8	189.0	203.0	229.2	265.5	298.8	320.0	370.0	417.0
	3.0	68.6	110.0	131.5	150.6	178.5	203.4	218.0	247.2	285.0	320.4	346.0	360.0	405.0
	3.5	72.8	116.8	139.5	159.6	189.0	216.0	232.0	261.6	303.0	340.2	366.0	382.5	432.0
	4.0	76.6	122.8	147.0	168.0	199.5	227.7	244.0	276.0	318.0	358.2	386.0	402.5	453.0
-2	1.0	43.4	71.6	87.0	100.2	121.5	140.4	152.0	175.2	207.0	237.6	260.0	307.5	357.0
	1.5	52.8	86.0	104.0	120.0	144.0	166.5	179.0	205.2	241.5	275.4	298.0	352.5	405.0
	2.0	59.6	96.8	116.5	134.4	161.3	185.4	200.0	228.0	267.0	304.2	330.0	387.5	444.0
	2.5	65.2	105.6	127.0	146.4	174.8	201.6	216.0	247.2	288.0	327.6	356.0	417.5	474.0
	3.0	69.8	113.2	136.0	156.6	186.8	215.1	231.0	262.8	307.5	349.2	378.0	395.0	450.0
	3.5	74.0	120.0	144.0	165.6	197.3	226.8	244.0	277.2	324.0	367.2	396.0	415.0	474.0
	4.0	77.8	126.0	151.0	173.4	207.0	237.6	255.0	290.4	337.5	383.4	414.0	435.0	492.0

Note : + slope : Uphill, - slope : Downhill
 Minimum Pressure at the end of the lateral is 0.5 kg/cm²

Maximum Running Length for Click Tif® HD



Dripper Spacing	20 cm	40 cm	50 cm	60 cm	75 cm	90 cm	100 cm	120 cm	150 cm	180 cm	200 cm	250 cm	300 cm	
Slope, %	Length (m)													
3 lph														
2	1.0	30.6	48.0	56.5	64.2	74.3	83.7	89.0	98.4	111.0	122.4	130.0	145.0	159.0
	1.5	38.2	60.4	71.5	81.0	95.3	108.0	115.0	128.4	145.5	162.0	172.0	195.0	213.0
	2.0	43.8	69.2	82.0	93.6	110.3	125.1	133.0	148.8	169.5	189.0	202.0	230.0	255.0
	2.5	48.2	76.4	91.0	103.2	121.5	138.6	148.0	165.6	189.0	210.6	226.0	257.5	285.0
	3.0	52.0	82.4	98.0	111.6	132.0	149.4	160.0	180.0	205.5	230.4	246.0	255.0	285.0
	3.5	55.2	88.0	104.5	119.4	140.3	160.2	171.0	192.0	220.5	246.6	264.0	275.0	306.0
	4.0	58.2	92.8	110.5	126.0	148.5	169.2	180.0	202.8	232.5	261.0	278.0	290.0	324.0
0	1.0	31.8	50.8	61.0	69.6	82.5	94.5	101.0	114.0	132.0	147.6	160.0	185.0	207.0
	1.5	39.2	62.8	75.0	85.8	102.0	116.1	125.0	140.4	162.0	183.6	196.0	227.5	255.0
	2.0	44.6	71.6	85.5	97.8	115.5	132.3	142.0	160.8	184.5	208.8	224.0	260.0	291.0
	2.5	49.0	78.4	94.0	107.4	127.5	144.9	156.0	176.4	202.5	228.6	246.0	285.0	321.0
	3.0	52.6	84.4	101.0	115.2	136.5	156.6	167.0	189.6	219.0	246.6	264.0	277.5	312.0
	3.5	56.0	89.6	107.0	122.4	145.5	165.6	178.0	201.6	232.5	261.0	282.0	292.5	330.0
	4.0	58.8	94.4	113.0	129.0	153.0	174.6	187.0	211.2	244.5	275.4	296.0	310.0	348.0
-2	1.0	33.0	54.0	65.5	75.6	90.8	104.4	113.0	129.6	153.0	174.6	190.0	225.0	258.0
	1.5	40.2	65.2	78.5	90.6	108.8	125.1	134.0	153.6	180.0	205.2	222.0	260.0	297.0
	2.0	45.4	73.6	88.5	102.0	121.5	140.4	151.0	171.6	199.5	226.8	246.0	287.5	330.0
	2.5	49.8	80.4	96.5	111.0	132.8	152.1	164.0	186.0	217.5	246.6	266.0	312.5	354.0
	3.0	53.4	86.4	103.5	118.8	141.8	162.9	175.0	199.2	231.0	262.8	284.0	297.5	336.0
	3.5	56.6	91.6	109.5	126.0	150.0	171.9	185.0	210.0	244.5	277.2	300.0	312.5	354.0
	4.0	59.6	96.0	115.0	132.0	157.5	180.9	194.0	220.8	256.5	289.8	312.0	327.5	372.0
4 lph														
2	1.0	25.6	40.0	47.5	54.0	63.0	71.1	75.0	84.0	94.5	104.4	112.0	125.0	138.0
	1.5	31.8	50.4	60.0	67.8	79.5	90.0	96.0	108.0	123.0	136.8	146.0	165.0	183.0
	2.0	36.4	57.6	68.5	78.0	92.3	104.4	111.0	124.8	142.5	160.2	170.0	195.0	216.0
	2.5	40.0	63.6	75.5	86.4	102.0	115.2	123.0	139.2	159.0	178.2	190.0	217.5	240.0
	3.0	43.2	68.8	81.5	93.0	110.3	125.1	134.0	150.0	172.5	192.6	206.0	215.0	240.0
	3.5	45.8	73.2	87.0	99.0	117.0	133.2	142.0	160.8	184.5	205.2	220.0	230.0	258.0
	4.0	48.4	77.2	92.0	104.4	123.8	140.4	150.0	169.2	195.0	217.8	234.0	242.5	273.0
0	1.0	26.4	42.4	50.5	57.6	68.3	78.3	84.0	94.8	109.5	122.4	132.0	152.5	171.0
	1.5	32.4	52.0	62.0	71.4	84.0	96.3	103.0	116.4	135.0	151.2	162.0	187.5	213.0
	2.0	37.0	59.2	71.0	81.0	96.0	109.8	117.0	133.2	153.0	172.8	186.0	215.0	240.0
	2.5	40.6	65.2	77.5	88.8	105.8	120.6	129.0	145.2	168.0	189.0	204.0	235.0	264.0
	3.0	43.6	70.0	83.5	95.4	113.3	129.6	139.0	157.2	181.5	203.4	220.0	230.0	258.0
	3.5	46.4	74.4	89.0	101.4	120.8	137.7	147.0	166.8	192.0	216.0	232.0	242.5	273.0
	4.0	48.8	78.4	93.5	106.8	126.8	144.9	155.0	175.2	202.5	228.6	246.0	255.0	288.0
-2	1.0	27.2	44.4	53.5	61.8	74.3	85.5	92.0	105.6	123.0	140.4	152.0	180.0	207.0
	1.5	33.2	54.0	64.5	74.4	89.3	102.6	110.0	124.8	147.0	165.6	180.0	210.0	240.0
	2.0	37.6	60.8	73.0	84.0	99.8	115.2	123.0	140.4	163.5	185.4	200.0	235.0	267.0
	2.5	41.2	66.4	79.5	91.8	108.8	125.1	134.0	152.4	178.5	201.6	218.0	255.0	288.0
	3.0	44.2	71.2	85.5	97.8	117.0	134.1	144.0	163.2	190.5	214.2	232.0	242.5	276.0
	3.5	46.8	75.6	90.5	103.8	123.8	142.2	152.0	172.8	201.0	226.8	246.0	257.5	291.0
	4.0	49.2	79.6	95.0	109.2	129.8	148.5	160.0	181.2	210.0	237.6	256.0	270.0	303.0

Note : + slope : Uphill, - slope : Downhill
 Minimum Pressure at the end of the lateral is 0.5 kg/cm²

Maximum Running Length for Click Tif® HD



Dripper Spacing	20 cm	40 cm	50 cm	60 cm	75 cm	90 cm	100 cm	120 cm	150 cm	180 cm	200 cm	250 cm	300 cm	
Slope, %	Length (m)													
8 lph														
2	1.0	16.4	26.0	31.0	34.8	41.3	46.8	50.0	55.2	63.0	70.2	76.0	85.0	93.0
	1.5	20.4	32.4	38.5	43.8	51.8	58.5	63.0	70.8	81.0	90.0	96.0	110.0	123.0
	2.0	23.2	37.2	44.0	50.4	59.3	67.5	72.0	81.6	93.0	104.4	112.0	127.5	141.0
	2.5	25.6	40.8	48.5	55.2	65.3	74.7	80.0	90.0	103.5	115.2	124.0	142.5	159.0
	3.0	27.6	44.0	52.5	60.0	70.5	80.1	86.0	97.2	111.0	124.2	134.0	140.0	156.0
	3.5	29.2	46.8	55.5	63.6	75.0	85.5	92.0	103.2	118.5	133.2	142.0	147.5	165.0
	4.0	30.8	49.2	58.5	67.2	79.5	90.0	97.0	109.2	126.0	140.4	150.0	157.5	177.0
0	1.0	16.8	26.8	32.0	36.6	43.5	49.5	53.0	60.0	69.0	77.4	84.0	95.0	108.0
	1.5	20.6	33.2	39.5	45.0	53.3	61.2	65.0	74.4	85.5	95.4	104.0	120.0	135.0
	2.0	23.4	37.6	45.0	51.6	60.8	69.3	74.0	84.0	97.5	109.8	118.0	135.0	153.0
	2.5	25.8	41.2	49.5	56.4	66.8	76.5	82.0	92.4	106.5	120.6	130.0	150.0	168.0
	3.0	27.8	44.4	53.0	60.6	72.0	81.9	88.0	99.6	115.5	129.6	140.0	145.0	162.0
	3.5	29.4	47.2	56.5	64.8	76.5	87.3	94.0	105.6	121.5	136.8	148.0	155.0	174.0
	4.0	31.0	49.6	59.5	67.8	80.3	91.8	98.0	111.6	129.0	144.0	156.0	162.5	183.0
-2	1.0	17.0	27.6	33.0	38.4	45.8	52.2	56.0	63.6	75.0	84.6	92.0	107.5	123.0
	1.5	21.0	33.6	40.5	46.2	55.5	63.9	68.0	78.0	90.0	102.6	110.0	127.5	147.0
	2.0	23.8	38.4	46.0	52.8	62.3	72.0	77.0	87.6	102.0	115.2	124.0	145.0	162.0
	2.5	26.0	42.0	50.0	57.6	68.3	78.3	84.0	94.8	111.0	124.2	134.0	157.5	177.0
	3.0	28.0	45.2	54.0	61.8	73.5	83.7	90.0	102.0	118.5	133.2	144.0	150.0	171.0
	3.5	29.6	47.6	57.0	65.4	78.0	89.1	96.0	108.0	126.0	142.2	152.0	160.0	180.0
	4.0	31.2	50.4	60.0	69.0	81.8	93.6	100.0	114.0	132.0	149.4	160.0	167.5	189.0
12 lph														
2	1.0	12.6	20.0	23.5	27.0	31.5	36.0	38.0	43.2	49.5	55.8	58.0	67.5	75.0
	1.5	15.6	24.8	29.5	33.6	39.8	45.0	48.0	54.0	63.0	70.2	74.0	85.0	96.0
	2.0	17.8	28.4	34.0	38.4	45.8	52.2	56.0	62.4	72.0	81.0	86.0	100.0	111.0
	2.5	19.6	31.2	37.5	42.6	50.3	57.6	61.0	69.6	79.5	88.2	96.0	110.0	123.0
	3.0	21.2	33.6	40.5	46.2	54.0	62.1	66.0	74.4	85.5	95.4	104.0	107.5	120.0
	3.5	22.4	36.0	43.0	49.2	57.8	65.7	70.0	79.2	91.5	102.6	110.0	115.0	129.0
	4.0	23.6	38.0	45.0	51.6	60.8	69.3	74.0	84.0	96.0	108.0	116.0	120.0	135.0
0	1.0	12.8	20.4	24.5	28.2	33.0	37.8	40.0	45.6	52.5	59.4	64.0	72.5	81.0
	1.5	15.8	25.2	30.0	34.8	41.3	46.8	50.0	56.4	64.5	73.8	78.0	90.0	102.0
	2.0	18.0	28.8	34.5	39.6	46.5	53.1	57.0	64.8	75.0	82.8	90.0	102.5	117.0
	2.5	19.8	31.6	38.0	43.2	51.0	58.5	63.0	70.8	81.0	91.8	98.0	115.0	129.0
	3.0	21.2	34.0	40.5	46.8	55.5	63.0	67.0	76.8	88.5	99.0	106.0	110.0	126.0
	3.5	22.6	36.4	43.5	49.2	58.5	66.6	72.0	81.6	93.0	104.4	114.0	117.5	132.0
	4.0	23.8	38.0	45.5	52.2	61.5	70.2	75.0	85.2	99.0	111.6	120.0	125.0	141.0
-2	1.0	13.0	20.8	25.0	28.8	34.5	39.6	42.0	48.0	55.5	63.0	68.0	80.0	90.0
	1.5	16.0	25.6	31.0	35.4	42.0	48.6	52.0	58.8	67.5	77.4	82.0	97.5	108.0
	2.0	18.2	29.2	35.0	40.2	47.3	54.9	58.0	66.0	76.5	86.4	94.0	107.5	123.0
	2.5	20.0	32.0	38.5	43.8	52.5	59.4	64.0	72.0	84.0	95.4	102.0	117.5	135.0
	3.0	21.4	34.4	41.0	47.4	56.3	63.9	69.0	78.0	90.0	100.8	110.0	115.0	129.0
	3.5	22.8	36.4	43.5	49.8	59.3	68.4	73.0	82.8	96.0	108.0	116.0	120.0	138.0
	4.0	24.0	38.4	46.0	52.8	62.3	71.1	77.0	86.4	100.5	113.4	122.0	127.5	144.0

Note : + slope : Uphill, - slope : Downhill
 Minimum Pressure at the end of the lateral is 0.5 kg/cm²

Maximum Running Length for Click Tif® HD



16 mm tube (13.8 mm ID tube)

Dripper Spacing		20 cm	40 cm	50 cm	60 cm	75 cm	90 cm	100 cm	120 cm	150 cm	180 cm	200 cm	250 cm	300 cm
Slope, %		Length (m)												
1.3 lph														
2	1.0	82.4	122.8	141.5	156.0	175.5	191.7	199.0	213.6	229.5	241.2	248.0	260.0	267.0
	1.5	105.4	161.2	188.0	210.0	241.5	267.3	281.0	307.2	337.5	363.6	378.0	410.0	432.0
	2.0	121.8	188.4	221.0	248.4	287.3	320.4	339.0	373.2	415.5	451.8	474.0	520.0	555.0
	2.5	135.0	210.0	247.0	279.0	324.0	362.7	384.0	424.8	477.0	522.0	550.0	607.5	657.0
	3.0	146.0	228.4	269.5	304.2	354.8	398.7	423.0	469.2	528.0	579.6	614.0	635.0	693.0
	3.5	155.8	244.4	288.5	326.4	381.0	429.3	456.0	506.4	573.0	631.8	668.0	692.5	759.0
	4.0	164.6	258.8	306.0	346.2	405.0	456.3	485.0	541.2	612.0	676.8	718.0	745.0	816.0
0	1.0	92.2	147.6	176.5	202.2	239.3	273.6	293.0	331.2	382.5	430.2	464.0	535.0	603.0
	1.5	113.4	182.0	217.5	249.0	295.5	337.5	361.0	408.0	472.5	531.0	572.0	660.0	744.0
	2.0	129.0	206.8	247.5	283.2	335.3	383.4	411.0	464.4	537.0	604.8	650.0	750.0	846.0
	2.5	141.6	227.2	271.5	310.2	368.3	421.2	451.0	510.0	589.5	662.4	714.0	825.0	927.0
	3.0	152.2	244.4	292.0	334.2	396.0	452.7	485.0	548.4	633.0	712.8	768.0	802.5	903.0
	3.5	161.6	259.6	310.0	354.6	420.8	480.6	515.0	582.0	672.0	757.8	814.0	852.5	957.0
	4.0	170.0	272.8	326.0	373.2	442.5	505.8	541.0	612.0	708.0	797.4	858.0	895.0	1008.0
-2	1.0	102.0	173.2	213.0	249.6	306.0	360.0	392.0	458.4	550.5	642.6	708.0	857.5	1008.0
	1.5	121.6	203.2	247.5	288.0	350.3	409.5	444.0	513.6	612.0	709.2	776.0	932.5	1086.0
	2.0	136.2	225.6	274.0	318.0	384.8	447.3	484.0	558.0	661.5	761.4	832.0	995.0	1152.0
	2.5	148.2	244.4	296.0	342.6	413.3	479.7	518.0	595.2	703.5	808.2	882.0	1047.5	1212.0
	3.0	158.4	260.4	315.0	363.6	438.0	507.6	548.0	628.8	741.0	849.6	924.0	975.0	1119.0
	3.5	167.6	274.4	331.5	382.8	460.5	532.8	574.0	657.6	774.0	885.6	964.0	1015.0	1164.0
	4.0	175.6	287.2	347.0	400.2	480.8	555.3	598.0	685.2	804.0	919.8	1000.0	1052.5	1206.0
2 lph														
2	1.0	64.0	97.2	113.0	126.0	144.0	158.4	166.0	181.2	198.0	210.6	220.0	235.0	246.0
	1.5	81.0	125.6	147.5	165.6	192.0	214.2	226.0	249.6	277.5	302.4	318.0	350.0	375.0
	2.0	93.4	145.6	172.0	193.8	225.8	253.8	269.0	297.6	334.5	367.2	388.0	432.5	468.0
	2.5	103.2	162.0	191.0	216.6	252.8	284.4	302.0	336.0	379.5	419.4	444.0	497.5	543.0
	3.0	111.6	175.6	207.5	235.2	275.3	310.5	331.0	368.4	418.5	462.6	490.0	510.0	561.0
	3.5	118.8	187.6	222.0	252.0	295.5	333.9	355.0	397.2	451.5	498.6	532.0	552.5	609.0
	4.0	125.4	198.0	235.0	266.4	312.8	353.7	377.0	421.2	480.0	532.8	568.0	590.0	651.0
0	1.0	69.6	111.6	133.5	152.4	180.8	207.0	221.0	250.8	289.5	325.8	350.0	405.0	456.0
	1.5	85.8	137.6	164.5	187.8	222.8	254.7	273.0	308.4	357.0	401.4	432.0	497.5	561.0
	2.0	97.4	156.4	187.0	213.6	253.5	289.8	310.0	350.4	405.0	455.4	490.0	567.5	639.0
	2.5	107.0	171.6	205.0	234.6	278.3	317.7	340.0	385.2	445.5	500.4	538.0	622.5	702.0
	3.0	115.0	184.8	220.5	252.6	299.3	342.0	366.0	414.0	478.5	538.2	580.0	605.0	681.0
	3.5	122.2	196.0	234.0	268.2	318.0	362.7	389.0	439.2	508.5	572.4	616.0	642.5	723.0
	4.0	128.6	206.4	246.5	282.0	334.5	382.5	409.0	463.2	535.5	601.2	648.0	677.5	762.0
-2	1.0	75.2	126.4	154.0	180.0	219.0	256.5	278.0	322.8	385.5	448.2	492.0	592.5	690.0
	1.5	90.4	149.6	181.5	210.6	254.3	296.1	320.0	368.4	436.5	504.0	550.0	655.0	759.0
	2.0	101.6	167.2	202.0	233.4	281.3	326.7	352.0	404.4	477.0	547.2	596.0	707.5	816.0
	2.5	110.8	181.6	219.0	252.6	303.8	351.9	379.0	434.4	510.0	583.2	636.0	750.0	864.0
	3.0	118.6	193.6	233.5	269.4	323.3	373.5	402.0	459.6	540.0	615.6	670.0	705.0	807.0
	3.5	125.6	204.8	246.5	283.8	340.5	392.4	423.0	483.6	567.0	646.2	700.0	737.5	843.0
	4.0	131.8	214.4	258.0	297.6	356.3	410.4	442.0	504.0	589.5	671.4	728.0	765.0	873.0

Note : + slope : Uphill, - slope : Downhill
 Minimum Pressure at the end of the lateral is 0.5 kg/cm²

Maximum Running Length for Click Tif® HD



Dripper Spacing	20 cm	40 cm	50 cm	60 cm	75 cm	90 cm	100 cm	120 cm	150 cm	180 cm	200 cm	250 cm	300 cm	
Slope, %	Length (m)													
3 lph														
2	1.0	50.2	77.2	90.5	101.4	117.0	129.6	137.0	150.0	166.5	180.0	188.0	205.0	219.0
	1.5	63.0	98.4	116.0	131.4	153.0	171.9	182.0	201.6	226.5	248.4	264.0	292.5	318.0
	2.0	72.4	114.0	134.5	152.4	178.5	200.7	214.0	237.6	270.0	297.0	316.0	355.0	387.0
	2.5	80.0	126.0	149.5	169.2	198.8	224.1	239.0	266.4	303.0	336.6	358.0	402.5	444.0
	3.0	86.2	136.4	162.0	183.6	216.0	243.9	260.0	291.6	331.5	367.2	392.0	407.5	450.0
	3.5	91.8	145.6	172.5	196.2	231.0	261.0	279.0	312.0	355.5	396.0	422.0	440.0	486.0
	4.0	96.8	153.6	182.5	207.6	243.8	277.2	295.0	331.2	378.0	421.2	450.0	467.5	519.0
0	1.0	53.4	85.6	102.5	117.0	138.8	158.4	170.0	192.0	222.0	250.2	268.0	310.0	348.0
	1.5	65.8	105.6	126.0	144.6	171.0	195.3	209.0	236.4	273.0	307.8	332.0	382.5	432.0
	2.0	74.8	120.0	143.5	164.4	195.0	222.3	238.0	268.8	310.5	351.0	376.0	435.0	489.0
	2.5	82.2	132.0	157.5	180.0	213.8	243.9	261.0	295.2	342.0	385.2	414.0	477.5	537.0
	3.0	88.4	141.6	169.5	193.8	229.5	262.8	281.0	318.0	367.5	414.0	444.0	465.0	522.0
	3.5	93.8	150.4	180.0	205.8	243.8	279.0	299.0	337.2	390.0	439.2	472.0	492.5	555.0
	4.0	98.8	158.4	189.5	216.6	256.5	293.4	314.0	355.2	411.0	462.6	498.0	520.0	585.0
-2	1.0	56.8	94.4	114.5	133.2	161.3	188.1	204.0	235.2	279.0	322.2	352.0	422.5	489.0
	1.5	68.6	112.8	136.5	157.8	189.8	219.6	237.0	272.4	321.0	369.0	402.0	475.0	549.0
	2.0	77.4	126.4	152.5	175.8	211.5	243.9	263.0	301.2	354.0	403.2	438.0	517.5	594.0
	2.5	84.4	137.6	166.0	190.8	228.8	263.7	284.0	325.2	381.0	433.8	470.0	555.0	633.0
	3.0	90.4	147.2	177.0	204.0	243.8	280.8	302.0	345.6	403.5	459.0	498.0	522.5	597.0
	3.5	95.8	155.6	187.0	215.4	257.3	296.1	319.0	363.6	424.5	482.4	522.0	550.0	624.0
	4.0	100.6	163.2	196.5	225.6	269.3	310.5	333.0	380.4	444.0	504.0	546.0	572.5	651.0
4 lph														
2	1.0	42.0	65.2	76.5	86.4	99.8	111.6	118.0	129.6	145.5	158.4	166.0	182.5	198.0
	1.5	52.6	82.8	97.5	110.4	129.0	145.8	155.0	171.6	195.0	214.2	228.0	255.0	279.0
	2.0	60.4	95.2	113.0	127.8	150.0	169.2	180.0	201.6	229.5	253.8	270.0	305.0	336.0
	2.5	66.6	105.2	125.0	142.2	166.5	189.0	201.0	225.6	256.5	284.4	304.0	345.0	381.0
	3.0	71.8	114.0	135.0	153.6	180.8	205.2	219.0	244.8	280.5	311.4	332.0	345.0	384.0
	3.5	76.4	121.2	144.0	163.8	193.5	219.6	234.0	262.8	300.0	334.8	358.0	372.5	414.0
	4.0	80.6	128.0	152.0	173.4	204.0	232.2	247.0	278.4	318.0	354.6	380.0	395.0	438.0
0	1.0	44.2	71.2	85.0	97.2	114.8	131.4	141.0	159.6	184.5	207.0	222.0	257.5	288.0
	1.5	54.6	87.6	104.5	119.4	141.8	162.0	174.0	196.8	226.5	255.6	274.0	317.5	357.0
	2.0	62.0	99.6	119.0	136.2	161.3	184.5	197.0	223.2	258.0	289.8	312.0	360.0	405.0
	2.5	68.2	109.2	130.5	149.4	177.0	202.5	217.0	244.8	283.5	318.6	342.0	395.0	447.0
	3.0	73.2	117.6	140.5	160.8	190.5	217.8	233.0	264.0	304.5	342.0	368.0	385.0	435.0
	3.5	77.8	124.8	149.0	170.4	202.5	231.3	248.0	279.6	324.0	363.6	392.0	410.0	459.0
	4.0	81.8	131.2	157.0	179.4	213.0	243.0	260.0	294.0	340.5	383.4	412.0	430.0	486.0
-2	1.0	46.6	76.8	93.5	108.0	130.5	152.1	164.0	188.4	223.5	257.4	280.0	335.0	387.0
	1.5	56.4	92.4	111.5	129.0	154.5	179.1	193.0	220.8	259.5	297.0	322.0	382.5	438.0
	2.0	63.8	104.0	125.0	144.0	172.5	198.9	214.0	244.8	286.5	327.6	356.0	417.5	477.0
	2.5	69.6	113.2	136.5	156.6	187.5	216.0	232.0	265.2	310.5	352.8	382.0	447.5	513.0
	3.0	74.8	121.2	146.0	167.4	200.3	230.4	248.0	282.0	330.0	374.4	406.0	425.0	483.0
	3.5	79.2	128.4	154.0	177.0	211.5	243.0	261.0	297.6	346.5	394.2	426.0	447.5	507.0
	4.0	83.2	134.8	161.5	186.0	222.0	254.7	274.0	312.0	363.0	412.2	446.0	467.5	531.0

Note : + slope : Uphill, - slope : Downhill
 Minimum Pressure at the end of the lateral is 0.5 kg/cm²

Maximum Running Length for Click Tif® HD



Dripper Spacing		20 cm	40 cm	50 cm	60 cm	75 cm	90 cm	100 cm	120 cm	150 cm	180 cm	200 cm	250 cm	300 cm
Slope, %		Length (m)												
8 lph														
2	1.0	27.2	42.8	50.5	57.0	66.8	75.6	80.0	88.8	100.5	111.6	118.0	132.5	144.0
	1.5	34.0	53.6	63.5	72.6	84.8	96.3	103.0	115.2	130.5	145.8	154.0	175.0	195.0
	2.0	38.8	61.6	73.0	83.4	98.3	111.6	119.0	133.2	151.5	169.2	182.0	205.0	228.0
	2.5	42.8	68.0	81.0	91.8	108.8	123.3	131.0	147.6	169.5	189.0	202.0	230.0	255.0
	3.0	46.0	73.2	87.0	99.6	117.0	133.2	142.0	159.6	183.0	205.2	220.0	227.5	255.0
	3.5	49.0	78.0	93.0	105.6	125.3	142.2	152.0	170.4	196.5	219.6	234.0	245.0	273.0
	4.0	51.6	82.4	98.0	111.6	132.0	150.3	160.0	180.0	207.0	232.2	248.0	260.0	288.0
0	1.0	28.2	45.2	54.0	61.8	72.8	83.7	89.0	100.8	117.0	131.4	142.0	162.5	183.0
	1.5	34.8	55.6	66.5	76.2	90.0	102.6	110.0	124.8	144.0	162.0	174.0	200.0	225.0
	2.0	39.6	63.2	75.5	86.4	102.8	117.0	125.0	141.6	163.5	183.6	198.0	230.0	258.0
	2.5	43.4	69.6	83.0	94.8	112.5	128.7	138.0	156.0	180.0	201.6	218.0	252.5	282.0
	3.0	46.6	74.8	89.5	102.0	121.5	138.6	148.0	168.0	193.5	217.8	234.0	245.0	276.0
	3.5	49.6	79.6	95.0	108.6	129.0	146.7	157.0	177.6	205.5	232.2	248.0	260.0	291.0
	4.0	52.2	83.6	100.0	114.0	135.8	154.8	166.0	187.2	216.0	243.0	262.0	272.5	309.0
-2	1.0	29.2	47.6	57.5	66.0	79.5	91.8	99.0	112.8	133.5	151.2	164.0	195.0	222.0
	1.5	35.4	57.6	69.5	79.8	95.3	109.8	118.0	134.4	157.5	178.2	194.0	227.5	258.0
	2.0	40.2	65.2	78.0	90.0	107.3	123.3	132.0	151.2	175.5	199.8	216.0	252.5	288.0
	2.5	44.0	71.2	85.5	97.8	117.0	134.1	144.0	164.4	190.5	216.0	234.0	272.5	309.0
	3.0	47.2	76.4	91.5	105.0	125.3	144.0	154.0	175.2	204.0	230.4	250.0	260.0	297.0
	3.5	50.0	80.8	97.0	111.0	132.8	152.1	163.0	184.8	216.0	243.0	264.0	275.0	312.0
	4.0	52.6	84.8	102.0	117.0	138.8	159.3	171.0	194.4	225.0	255.6	276.0	287.5	327.0
12 lph														
2	1.0	21.0	33.2	39.5	44.4	52.5	59.4	63.0	70.8	79.5	88.2	94.0	107.5	117.0
	1.5	26.2	41.6	49.5	56.4	66.0	74.7	80.0	90.0	102.0	113.4	122.0	140.0	153.0
	2.0	30.0	47.6	56.5	64.2	75.8	86.4	92.0	103.2	118.5	133.2	142.0	162.5	180.0
	2.5	33.0	52.4	62.5	70.8	84.0	95.4	102.0	115.2	132.0	147.6	158.0	180.0	201.0
	3.0	35.4	56.4	67.5	76.8	90.8	103.5	110.0	123.6	142.5	160.2	170.0	177.5	198.0
	3.5	37.6	60.0	71.5	81.6	96.8	109.8	117.0	132.0	151.5	171.0	182.0	190.0	213.0
	4.0	39.8	63.2	75.5	86.4	102.0	116.1	124.0	139.2	160.5	180.0	194.0	200.0	225.0
0	1.0	21.6	34.4	41.5	47.4	56.3	63.9	68.0	76.8	90.0	100.8	108.0	125.0	141.0
	1.5	26.6	42.8	51.0	58.2	69.0	79.2	85.0	96.0	111.0	124.2	134.0	155.0	174.0
	2.0	30.4	48.4	58.0	66.6	78.8	90.0	96.0	109.2	126.0	140.4	152.0	175.0	198.0
	2.5	33.2	53.2	63.5	72.6	86.3	99.0	106.0	120.0	138.0	154.8	166.0	192.5	216.0
	3.0	35.8	57.2	68.5	78.6	93.0	106.2	114.0	128.4	148.5	167.4	180.0	187.5	210.0
	3.5	38.0	60.8	73.0	83.4	99.0	112.5	121.0	136.8	157.5	178.2	190.0	200.0	225.0
	4.0	40.0	64.0	76.5	87.6	104.3	118.8	127.0	144.0	166.5	187.2	200.0	210.0	237.0
-2	1.0	22.2	36.0	43.5	49.8	60.0	68.4	74.0	84.0	99.0	113.4	122.0	142.5	165.0
	1.5	27.0	44.0	52.5	60.6	72.0	82.8	89.0	102.0	118.5	133.2	144.0	170.0	192.0
	2.0	30.8	49.6	59.5	68.4	81.8	93.6	100.0	114.0	132.0	149.4	162.0	190.0	216.0
	2.5	33.6	54.4	65.0	74.4	89.3	101.7	109.0	124.8	144.0	163.8	176.0	205.0	234.0
	3.0	36.2	58.4	70.0	79.8	95.3	108.9	117.0	133.2	154.5	174.6	188.0	197.5	222.0
	3.5	38.4	62.0	74.0	84.6	101.3	116.1	124.0	140.4	163.5	185.4	200.0	207.5	237.0
	4.0	40.4	64.8	78.0	89.4	105.8	121.5	130.0	147.6	171.0	194.4	208.0	217.5	246.0

Note : + slope : Uphill, - slope : Downhill
 Minimum Pressure at the end of the lateral is 0.5 kg/cm²

Maximum Running Length for Click Tif® HD



20 mm tube (17.6 mm ID tube)

Dripper Spacing		20 cm	40 cm	50 cm	60 cm	75 cm	90 cm	100 cm	120 cm	150 cm	180 cm	200 cm	250 cm	300 cm
Slope, %		Length (m)												
1.3 lph														
2	1.0	117.4	168.0	189.0	204.6	224.3	238.5	245.0	255.6	267.0	273.6	278.0	282.5	288.0
	1.5	153.4	228.8	263.0	290.4	326.3	355.5	370.0	396.0	424.5	446.4	460.0	480.0	495.0
	2.0	179.0	271.6	315.0	351.0	399.8	440.1	461.0	499.2	544.5	581.4	602.0	642.5	672.0
	2.5	199.4	305.6	356.0	398.4	457.5	506.7	533.0	582.0	642.0	691.2	720.0	777.5	822.0
	3.0	216.6	334.0	391.0	438.6	505.5	563.4	594.0	651.6	723.0	783.0	820.0	842.5	903.0
	3.5	231.6	358.8	421.0	473.4	547.5	612.0	646.0	711.6	793.5	864.0	908.0	935.0	1008.0
	4.0	245.0	380.8	447.5	504.6	585.0	655.2	693.0	765.6	856.5	936.0	986.0	1017.5	1101.0
0	1.0	139.6	224.0	268.0	306.0	363.0	414.9	444.0	502.8	580.5	653.4	704.0	812.5	915.0
	1.5	172.0	276.0	330.0	377.4	447.8	511.2	548.0	619.2	715.5	806.4	866.0	1002.5	1128.0
	2.0	195.6	314.0	375.0	429.0	508.5	581.4	622.0	704.4	814.5	916.2	986.0	1140.0	1281.0
	2.5	214.6	344.4	411.5	470.4	558.0	638.1	683.0	772.8	892.5	1004.4	1082.0	1250.0	1407.0
	3.0	230.8	370.4	442.5	506.4	600.8	685.8	735.0	831.6	960.0	1081.8	1164.0	1217.5	1368.0
	3.5	245.0	393.2	470.0	537.6	637.5	728.1	780.0	882.0	1020.0	1148.4	1236.0	1292.5	1455.0
	4.0	257.8	413.6	494.5	565.8	670.5	766.8	821.0	928.8	1072.5	1207.8	1300.0	1360.0	1530.0
-2	1.0	162.4	282.4	350.5	414.6	514.5	611.1	668.0	786.0	955.5	1123.2	1242.0	1520.0	1797.0
	1.5	190.8	324.4	398.5	467.4	573.8	675.9	735.0	858.0	1033.5	1206.0	1328.0	1610.0	1890.0
	2.0	212.2	356.8	436.0	508.8	621.0	728.1	790.0	918.0	1098.0	1274.4	1400.0	1687.5	1971.0
	2.5	229.8	383.6	467.5	544.2	661.5	772.2	837.0	969.6	1155.0	1335.6	1464.0	1757.5	2046.0
	3.0	245.0	407.2	495.0	574.8	696.8	811.8	879.0	1015.2	1206.0	1391.4	1522.0	1607.5	1863.0
	3.5	258.4	428.0	519.5	602.4	729.0	847.8	916.0	1057.2	1252.5	1441.8	1574.0	1662.5	1923.0
	4.0	270.6	446.8	541.5	627.6	757.5	880.2	951.0	1094.4	1294.5	1467.0	1624.0	1712.5	1977.0
2 lph														
2	1.0	92.8	136.8	156.5	171.6	192.0	207.0	215.0	229.2	243.0	253.8	260.0	270.0	276.0
	1.5	119.4	181.2	210.5	234.6	267.8	295.2	310.0	336.0	367.5	392.4	408.0	435.0	456.0
	2.0	138.4	212.8	249.0	279.0	321.0	357.3	377.0	412.8	457.5	495.0	518.0	562.5	597.0
	2.5	153.4	238.0	279.0	314.4	363.8	406.8	430.0	474.0	528.0	576.0	606.0	665.0	714.0
	3.0	166.4	259.2	305.0	343.8	399.0	447.3	474.0	524.4	588.0	644.4	680.0	700.0	759.0
	3.5	177.6	277.6	327.0	369.6	430.5	483.3	513.0	568.8	640.5	702.0	744.0	767.5	837.0
	4.0	187.6	294.0	347.0	392.4	457.5	514.8	547.0	608.4	685.5	756.0	800.0	827.5	906.0
0	1.0	105.6	169.2	202.5	231.6	274.5	313.2	336.0	379.2	439.5	493.2	532.0	615.0	690.0
	1.5	130.0	208.4	249.0	285.0	338.3	386.1	414.0	468.0	541.5	608.4	654.0	757.5	852.0
	2.0	147.8	237.2	283.5	324.0	384.8	439.2	470.0	531.6	615.0	691.2	744.0	860.0	969.0
	2.5	162.2	260.4	311.0	355.8	422.3	482.4	516.0	584.4	675.0	759.6	818.0	945.0	1062.0
	3.0	174.4	280.0	334.5	382.8	453.8	518.4	555.0	627.6	726.0	817.2	880.0	920.0	1035.0
	3.5	185.2	297.2	355.0	406.2	481.5	550.8	589.0	667.2	771.0	867.6	934.0	975.0	1098.0
	4.0	194.8	312.8	373.5	427.2	507.0	579.6	620.0	702.0	811.5	912.6	982.0	1027.5	1155.0
-2	1.0	118.6	202.8	250.0	293.4	361.5	426.6	465.0	544.8	657.0	768.6	848.0	1032.5	1215.0
	1.5	140.8	236.4	288.5	336.6	410.3	480.6	522.0	606.0	724.5	840.6	922.0	1110.0	1299.0
	2.0	157.2	261.6	318.5	370.2	448.5	522.9	567.0	655.2	778.5	898.2	984.0	1177.5	1368.0
	2.5	170.8	282.8	343.0	397.8	480.8	558.9	604.0	697.2	825.0	950.4	1038.0	1237.5	1434.0
	3.0	182.6	300.8	364.5	421.8	509.3	590.4	638.0	733.2	867.0	995.4	1086.0	1145.0	1320.0
	3.5	192.8	317.2	383.5	443.4	534.0	618.3	668.0	766.8	904.5	1036.8	1128.0	1190.0	1368.0
	4.0	202.2	331.6	400.5	462.6	556.5	644.4	695.0	796.8	937.5	1072.8	1168.0	1230.0	1413.0

Note : + slope : Uphill, - slope : Downhill
 Minimum Pressure at the end of the lateral is 0.5 kg/cm²

Maximum Running Length for Click Tif® HD



Dripper Spacing		20 cm	40 cm	50 cm	60 cm	75 cm	90 cm	100 cm	120 cm	150 cm	180 cm	200 cm	250 cm	300 cm
Slope, %		Length (m)												
3 lph														
2	1.0	73.4	110.8	128.0	142.2	160.5	176.4	184.0	199.2	216.0	228.6	236.0	250.0	258.0
	1.5	93.6	144.0	168.5	189.0	217.5	242.1	255.0	279.6	310.5	334.8	352.0	382.5	408.0
	2.0	108.0	167.6	197.0	222.0	258.0	288.9	305.0	337.2	378.0	412.2	434.0	480.0	516.0
	2.5	119.4	186.8	220.0	248.4	289.5	324.9	345.0	382.8	430.5	473.4	500.0	557.5	603.0
	3.0	129.2	202.8	239.5	270.6	316.5	356.4	378.0	421.2	475.5	523.8	556.0	575.0	630.0
	3.5	137.8	216.8	256.0	290.4	339.8	383.4	407.0	453.6	514.5	568.8	604.0	625.0	687.0
	4.0	145.4	229.2	271.0	307.8	360.0	406.8	433.0	483.6	549.0	606.6	646.0	670.0	738.0
0	1.0	81.0	130.0	155.5	177.6	210.8	241.2	258.0	291.6	337.5	379.8	408.0	472.5	531.0
	1.5	99.8	160.4	191.5	219.0	259.5	297.0	318.0	358.8	415.5	468.0	502.0	580.0	654.0
	2.0	113.6	182.0	217.5	249.0	295.5	337.5	361.0	408.0	472.5	531.0	572.0	660.0	744.0
	2.5	124.6	200.0	239.0	273.0	324.0	369.9	396.0	448.8	517.5	583.2	628.0	725.0	816.0
	3.0	134.0	215.2	257.0	294.0	348.8	398.7	426.0	482.4	558.0	628.2	676.0	705.0	795.0
	3.5	142.2	228.4	273.0	312.0	369.8	423.0	453.0	512.4	592.5	666.0	716.0	750.0	843.0
	4.0	149.6	240.4	287.0	328.2	389.3	444.6	476.0	538.8	622.5	700.2	754.0	787.5	888.0
-2	1.0	88.8	149.6	183.5	214.8	262.5	307.8	335.0	390.0	468.0	543.6	598.0	722.5	846.0
	1.5	106.2	176.4	214.5	249.6	302.3	352.8	382.0	441.6	525.0	604.8	662.0	792.5	921.0
	2.0	119.2	196.8	238.5	276.0	333.0	387.0	418.0	481.2	570.0	655.2	714.0	850.0	984.0
	2.5	129.8	213.2	258.0	298.2	359.3	415.8	449.0	514.8	607.5	696.6	758.0	900.0	1035.0
	3.0	138.8	227.6	274.5	316.8	381.0	441.0	475.0	544.8	640.5	732.6	798.0	840.0	963.0
	3.5	146.8	240.0	289.5	334.2	401.3	463.5	499.0	571.2	670.5	766.8	832.0	875.0	1002.0
	4.0	154.0	251.2	303.0	349.2	418.5	483.3	520.0	595.2	697.5	795.6	864.0	910.0	1041.0
4 lph														
2	1.0	62.0	94.4	110.0	122.4	140.3	154.8	162.0	176.4	193.5	207.0	216.0	230.0	243.0
	1.5	78.4	121.6	143.0	160.8	186.0	207.9	220.0	242.4	271.5	295.2	310.0	342.5	366.0
	2.0	90.2	141.2	166.5	187.8	219.0	245.7	261.0	289.2	325.5	358.2	378.0	420.0	456.0
	2.5	99.8	156.8	185.0	209.4	245.3	276.3	293.0	326.4	369.0	406.8	432.0	485.0	528.0
	3.0	107.8	170.0	201.0	228.0	267.0	301.5	320.0	357.6	405.0	448.2	478.0	495.0	543.0
	3.5	114.8	181.2	215.0	243.6	285.8	323.1	344.0	384.0	436.5	484.2	516.0	535.0	591.0
	4.0	121.2	191.6	227.0	258.0	303.0	342.9	365.0	408.0	465.0	516.6	550.0	572.5	633.0
0	1.0	67.2	108.0	129.0	147.6	174.8	199.8	214.0	241.2	279.0	315.0	338.0	390.0	441.0
	1.5	82.8	132.8	158.5	181.8	215.3	245.7	263.0	297.6	343.5	387.0	416.0	482.5	543.0
	2.0	94.2	151.2	180.5	206.4	244.5	279.9	300.0	338.4	391.5	441.0	474.0	547.5	615.0
	2.5	103.4	165.6	198.0	226.8	268.5	306.9	329.0	372.0	429.0	484.2	520.0	600.0	678.0
	3.0	111.2	178.4	213.0	243.6	288.8	330.3	354.0	399.6	462.0	520.2	560.0	585.0	657.0
	3.5	118.0	189.2	226.0	258.6	306.8	351.0	375.0	424.8	490.5	552.6	594.0	620.0	699.0
	4.0	124.2	199.2	238.0	272.4	323.3	369.0	395.0	446.4	516.0	581.4	626.0	652.5	735.0
-2	1.0	72.4	121.6	148.0	172.8	210.8	245.7	267.0	309.6	370.5	428.4	470.0	565.0	660.0
	1.5	87.2	144.0	175.0	202.8	244.5	284.4	308.0	354.0	420.0	482.4	526.0	627.5	726.0
	2.0	98.0	161.2	194.5	225.0	270.8	314.1	339.0	388.8	459.0	525.6	572.0	677.5	783.0
	2.5	106.8	174.8	211.0	243.6	292.5	338.4	365.0	417.6	490.5	561.6	610.0	722.5	828.0
	3.0	114.4	186.8	225.0	259.8	311.3	359.1	387.0	442.8	519.0	592.2	644.0	677.5	774.0
	3.5	121.2	197.2	237.5	273.6	327.8	378.0	407.0	465.6	544.5	621.0	674.0	707.5	810.0
	4.0	127.2	206.8	249.0	286.8	343.5	395.1	425.0	486.0	568.5	646.2	702.0	737.5	840.0

Note : + slope : Uphill, - slope : Downhill
 Minimum Pressure at the end of the lateral is 0.5 kg/cm²

JAIN DRIPPERS

Maximum Running Length for Click Tif® HD



Dripper Spacing	20 cm	40 cm	50 cm	60 cm	75 cm	90 cm	100 cm	120 cm	150 cm	180 cm	200 cm	250 cm	300 cm	
Slope, %	Length (m)													
8 lph														
2	1.0	40.6	63.2	74.0	83.4	96.8	108.0	115.0	126.0	141.0	154.8	162.0	180.0	192.0
	1.5	51.0	80.0	94.5	106.8	125.3	141.3	150.0	166.8	189.0	208.8	222.0	247.5	270.0
	2.0	58.4	92.0	109.0	123.6	145.5	164.7	175.0	195.6	222.0	246.6	262.0	295.0	327.0
	2.5	64.4	102.0	121.0	137.4	161.3	182.7	195.0	218.4	249.0	277.2	294.0	335.0	369.0
	3.0	69.4	110.0	130.5	148.8	174.8	198.0	212.0	237.6	271.5	302.4	322.0	335.0	372.0
	3.5	73.8	117.2	139.5	158.4	186.8	212.4	226.0	254.4	291.0	324.0	346.0	360.0	399.0
	4.0	77.8	123.6	147.0	167.4	197.3	224.1	239.0	268.8	307.5	343.8	368.0	382.5	426.0
0	1.0	42.8	68.4	82.0	93.6	111.0	126.9	136.0	153.6	177.0	199.8	214.0	247.5	279.0
	1.5	52.8	84.4	101.0	115.8	137.3	156.6	168.0	189.6	219.0	246.6	266.0	305.0	345.0
	2.0	60.0	96.0	115.0	131.4	156.0	178.2	191.0	216.0	249.0	280.8	302.0	347.5	393.0
	2.5	65.8	105.6	126.0	144.0	171.0	195.3	209.0	236.4	273.0	307.8	332.0	382.5	429.0
	3.0	70.8	113.6	135.5	155.4	183.8	210.6	225.0	254.4	294.0	331.2	356.0	372.5	420.0
	3.5	75.2	120.4	144.0	165.0	195.8	223.2	239.0	270.0	312.0	351.0	378.0	395.0	444.0
	4.0	79.0	126.8	151.5	173.4	205.5	234.9	252.0	284.4	328.5	370.8	398.0	415.0	468.0
-2	1.0	45.0	74.0	90.0	103.8	126.0	145.8	158.0	181.2	214.5	246.6	270.0	320.0	369.0
	1.5	54.4	89.2	107.5	124.2	149.3	171.9	186.0	212.4	249.0	284.4	310.0	365.0	420.0
	2.0	61.6	100.4	120.5	139.2	166.5	191.7	207.0	236.4	276.0	315.0	342.0	402.5	459.0
	2.5	67.2	109.2	131.5	151.2	180.8	207.9	224.0	255.6	298.5	338.4	368.0	432.5	492.0
	3.0	72.2	117.2	140.5	161.4	192.8	222.3	239.0	272.4	318.0	360.0	390.0	410.0	465.0
	3.5	76.4	124.0	148.5	171.0	204.0	234.9	252.0	286.8	334.5	379.8	410.0	430.0	489.0
	4.0	80.2	130.0	156.0	179.4	213.8	245.7	264.0	300.0	349.5	396.0	428.0	450.0	510.0
12 lph														
2	1.0	31.6	49.2	58.0	66.0	76.5	86.4	92.0	102.0	114.0	126.0	134.0	150.0	162.0
	1.5	39.4	62.4	73.5	83.4	98.3	110.7	118.0	132.0	150.0	165.6	178.0	200.0	219.0
	2.0	45.2	71.6	85.0	96.6	113.3	128.7	137.0	153.6	175.5	194.4	208.0	235.0	261.0
	2.5	49.6	78.8	93.5	106.8	125.3	142.2	152.0	170.4	195.0	217.8	232.0	265.0	294.0
	3.0	53.6	85.2	101.0	115.2	135.8	154.8	165.0	184.8	211.5	235.8	254.0	262.5	294.0
	3.5	57.0	90.8	108.0	123.0	144.8	164.7	176.0	198.0	226.5	253.8	272.0	282.5	315.0
	4.0	60.0	95.6	114.0	129.6	153.0	173.7	186.0	208.8	240.0	268.2	288.0	300.0	333.0
0	1.0	32.8	52.8	63.0	72.0	85.5	97.2	104.0	117.6	136.5	153.0	164.0	190.0	213.0
	1.5	40.4	64.8	77.5	88.8	105.0	119.7	129.0	145.2	168.0	189.0	204.0	235.0	264.0
	2.0	46.0	74.0	88.0	100.8	119.3	136.8	146.0	165.6	190.5	214.2	232.0	267.5	300.0
	2.5	50.6	81.2	97.0	111.0	131.3	150.3	161.0	181.2	210.0	235.8	254.0	292.5	330.0
	3.0	54.4	87.2	104.0	119.4	141.0	161.1	173.0	195.6	225.0	253.8	274.0	285.0	321.0
	3.5	57.8	92.4	110.5	126.6	150.0	171.0	183.0	207.6	240.0	270.0	290.0	302.5	342.0
	4.0	60.8	97.6	116.5	133.2	157.5	180.0	193.0	218.4	252.0	284.4	306.0	320.0	360.0
-2	1.0	34.0	56.0	67.5	78.0	93.8	108.9	117.0	134.4	157.5	180.0	196.0	232.5	267.0
	1.5	41.6	67.6	81.5	93.6	112.5	129.6	139.0	158.4	186.0	212.4	230.0	270.0	309.0
	2.0	47.0	76.0	91.5	105.6	126.0	144.9	156.0	177.6	207.0	235.8	254.0	297.5	339.0
	2.5	51.4	83.2	100.0	114.6	137.3	157.5	169.0	193.2	225.0	253.8	276.0	322.5	366.0
	3.0	55.2	89.2	107.0	123.0	146.3	168.3	181.0	205.2	240.0	271.8	294.0	307.5	348.0
	3.5	58.4	94.4	113.5	130.2	155.3	178.2	191.0	217.2	252.0	286.2	310.0	325.0	366.0
	4.0	61.4	99.2	119.0	136.8	162.8	186.3	200.0	228.0	264.0	298.8	324.0	340.0	384.0

Note : + slope : Uphill, - slope : Downhill
 Minimum Pressure at the end of the lateral is 0.5 kg/cm²