

# Dripline Accessories

## Auto Flush Valve Lateral Filter



Tube size	Connection	Code	Bag	Box		
			Qty. (nos.)	Qty. (nos.)	Wt. (kg)	Code
12 x 12 OD	Poly Barbed	AFLF12PB	N.A	150	14.8	B
16 x 16 OD		AFLF16PB	N.A	150	14.9	B
20 x 20 OD		AFLF20PB	N.A	150	16.2	B
13 x 13 ID		AFLF13PB	N.A	150	15.7	B
12 x 12 OD	Split Ring Barbed	AFLF12SR	N.A	150	14.8	B
16 x 16 OD		AFLF16SR	N.A	150	15.0	B
20 x 20 OD		AFLF20SR	N.A	150	16.3	B
13 x 13 ID		AFLF13SR	N.A	150	-	B
12 x 12 OD	Poly Barbed inlet x Split Ring outlet	AFLF12PS	N.A	150	15.7	B
16 x 16 OD		AFLF16PS	N.A	150	16.1	B
20 x 20 OD		AFLF20PS	N.A	150	16.3	B
13 x 13 ID		AFLF13PS	N.A	150	-	B
12 x 12 OD	Swivel	AFLF12SB	N.A	120	-	B
16 x 16 OD		AFLF16SB	N.A	120	15.0	B
20 x 20 OD		AFLF20SB	N.A	120	-	B

## Jain Lateral Drain Valve



Tube size	Connection	Code	Bag	Box		
			Qty. (nos.)	Qty. (nos.)	Wt. (kg)	Code
12 OD	Poly Barbed	JLDPB12	50	1000	14.9	B
16 OD		JLDPB16	50	1000	16.4	B
20 OD		JLDPB20	50	900	15.8	B
13 ID		JLDPB13	50	1000	16.0	B
12 OD	Split Ring Barbed	JLDSR12	50	1000	15.4	B
16 OD		JLDSR16	50	1000	17.4	B
20 OD		JLDSR20	50	900	15.8	B
13 ID		JLDSR13	50	1000	16.0	B
16 ID	Ring Lock	JLDDT16	50	1000	15.0	B
16 ID	Tape Lock	JLDCJ16	50	900	21.7	B

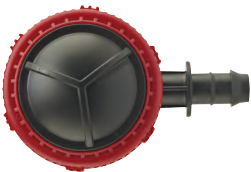
# Dripline Accessories

## Lateral Filter



Tube size	Connection	Code	Bag	Box		
			Qty. (nos.)	Qty. (nos.)	Wt. (kg)	Code
12 x 12 OD	Poly Barbed	LF12PB	N.A	150	13.4	B
16 x 16 OD		LF16PB	N.A	150	13.7	B
20 x 20 OD		LF20PB	N.A	150	14.2	B
13 x 13 ID		LF13PB	N.A	150	13.9	B
12 x 12 OD	Split Ring Barbed	LF12SR	N.A	150	13.4	B
16 x 16 OD		LF16SR	N.A	150	14.2	B
20 x 20 OD		LF20SR	N.A	150	14.5	B
13 x 13 ID		LF13SR	N.A	150	14.0	B
12 x 12 OD	Poly Barbed inlet x Split Ring outlet	LF12PS	N.A	150	13.9	B
16 x 16 OD		LF16PS	N.A	150	14.2	B
20 x 20 OD		LF20PS	N.A	150	14.6	B
13 x 13 ID		LF13PS	N.A	150	14.0	B
12 x 12 OD	Swivel	LF12SB	N.A	120	13.1	B
16 x 16 OD		LF16SB	N.A	120	13.7	B
20 x 20 OD		LF20SB	N.A	120	13.6	B

## Lateral Flush Valve



Tube size	Conne- ction	Code	Bag	Box		
			Qty (nos)	Qty (nos)	Wt. (kg)	Code
16 OD	Poly Barbed	790716	N.A	500	25.0	B
20 OD		790720	N.A	500	25.5	B
½"(Male)		790701	N.A	500	27.5	B
¾"(Male)		790702	N.A	500	30.0	B

## Inline Plug



Suitable Tube	Code	Bag Qty. (nos.)	Box		
			Qty. (nos.)	Wt (kg)	Code
12 mm ND	IPF12	500	30000	20.5	B
16 mm ND	IPF16	500	25000	20.9	B
20 mm ND	IPF20	500	20000	19.6	B

# Dripline Accessories

## Lateral Leakage Prevention Device



Size	Code	Bag	Box		
		Qty. (nos.)	Qty. (nos.)	Wt. (kg)	Code
16OD x 16OD	790616	N.A	500		B
20OD x 20OD	790610	N.A	500		B
½" X 16OD	6424040610	N.A	500	16.5	B
½" X 20OD	6424040630	N.A	500	18.0	B

To prevent low head drainage through dripline use additional 1/2" threaded adaptor suitable for type of dripline.

## Finger Filter



Size	Code	Bag	Box		
		Qty. (nos.)	Qty. (nos.)	Wt. (kg)	Code
1/4" x 1/8"	FF1418	N.A	800	9.0	B
1/4" x 1/4"	FF1414	N.A	800	9.0	B

## Mini Valve



Size	Code	Bag	Box		
		Qty. (nos.)	Qty. (nos.)	Wt. (kg)	Code
12 OD x 12 OD	DPMV1212	100	500	12.0	B
16 OD x 16 OD	PMV1616	100	500	12.0	B
20 OD x 20 OD	PMV2020	100	400	12.0	B
16 OD x 1/2"	PMV1612	100	500	12.0	B

## Swing Joints



Connection Size inch	Length, cm	Code	Bag	Box		
			Qty. (nos.)	Qty. (nos.)	Wt. (kg)	Code
1"	30	SJ-1	N.A.	30	13.4	B
½"	15	SJ-506	N.A.	250	25.3	B
	30	SJ-512	N.A.	150	27.8	B
¾"	15	SJ-706	N.A.	125	40.0	B
	30	SJ-712	N.A.	75	45.0	B
¾"x½"	15	SJ-7506	N.A.	225	12.0	B
	30	SJ-7512	N.A.	125	12.0	B

## Micro Tube Weight



Sutability	Code	Bag	Box		
		Qty. (nos.)	Qty. (nos.)	Wt. (kg)	Code
ON-OFF Type	12771001	500	1000	15.2	D

## Push Fit Service Saddle



Sutability	Code	Bag	Box		
		Qty. (nos.)	Qty. (nos.)	Wt. (kg)	Code
32mm OD PVC/PE pipe	SSPF32	50	500	17.7	B
25 mm PVC	PFA7520	100	1000		B

Push fit (for fogger/micro sprinkler with push fit connection/Green Mist etc.