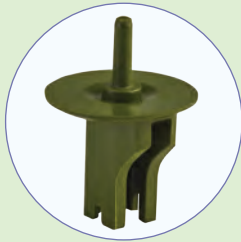


# 2005 Aqua Master

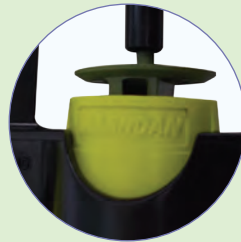


## Features & Benefits



### Unique Swivel Design

Unique water swivel for optimum distribution, maximum range and fine droplets



### Insect Proof Popup Swivel

Innovative structure for improved durability, performance and Popup action for insect protection



### Easy to Dismantle and Assemble

Offers ease in maintenance & inspection



### Specially Designed Side Ribs

Smooth streamlined side ribs to secure the spinner and give minimum obstruction to water jet



### No Need of Adaptor

Sprinkler has inbuilt sprinkler adaptor for 6mm riser rod support facility



### Tapered Inlet Connection

Available in push-fit / tapered inlet connection for ease connectivity with assembly. Can also be supplied with 3/8" thread and 1/2" thread connection.

# 2005 Aqua Master

## Additional Features

- **One of best Micro Sprinkler:** Uniform coverage over a wide range of spacing, flow rates and pressures.
- **Manufactured from special grade polymer material:** Components manufactured out of revolutionary polymers to achieve wear resistance and longer trouble free performance.
- **Excellent Precipitation:** Gentle precipitation, no damage to flowers / plants
- **Quality Come First:** Each batch is tested for stringent quality parameters.

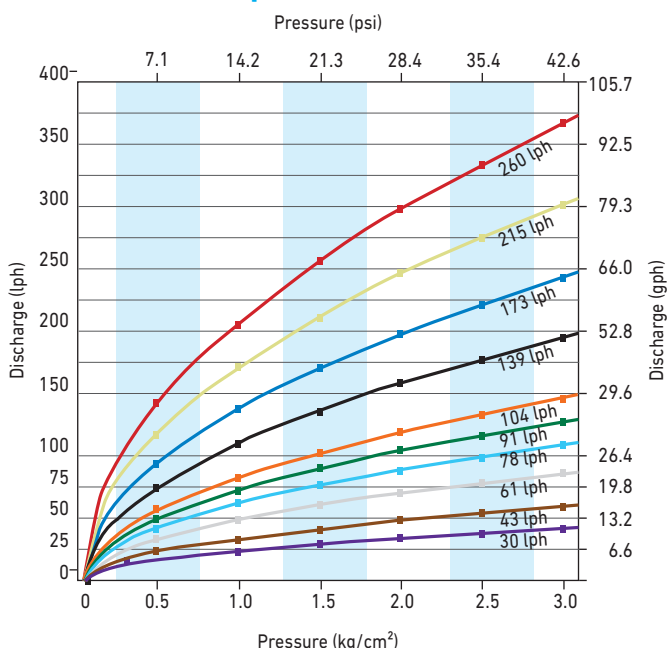
## Applications

- The most economical solution for under tree and overhead irrigation
- Particularly suitable for widely-spaced plantations, (such as walnut, almond, avocado and mango)
- Suitable also for overhead irrigation on Rainport system for vegetables and nurseries (up to 6 x 6 m spacing)

## Specifications

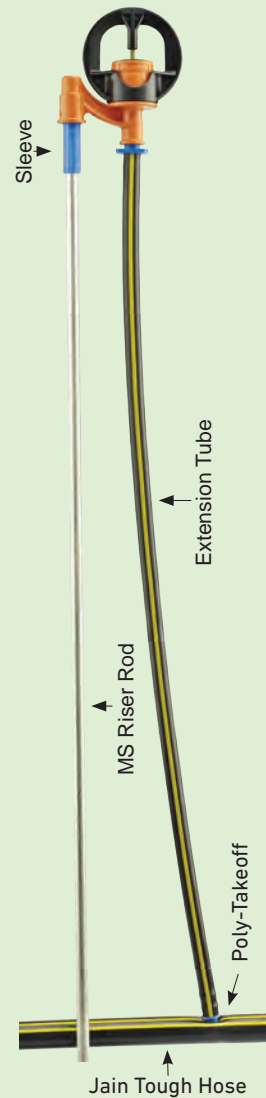
- Flow Rates: 30 to 365 lph
- Inlet Connection: Push-Fit Connection
- Recommended Spacing's: 4m to 7m
- Recommended Pressure: 1.5 kg/cm<sup>2</sup> to 3 kg/cm<sup>2</sup>
- Easy to install with different mounting options, for details please refer to "Polyfittings & Accessories" section
- Filtration requirement:
  - 130 micron for purple and brown nozzles
  - 200 micron for other nozzles.

## Performance Graph



Note : Sprinkler tested under standard test conditions.

## 200 Aqua Master Assembly



# 2005 Aqua Master

## Flow Rate (l/h) Vs. Pressure (kg/cm<sup>2</sup>)

Nozzle Color	Nozzle Ø (mm)	Pressure (kg/cm <sup>2</sup> )		
		1.5	2.0	2.5
Violet	0.80	30	35	39
Brown	0.94	43	50	56
Grey	1.14	61	70	78
Turquoise	1.34	78	90	101
Green	1.40	91	105	117
Orange	1.50	104	120	134
Black	1.74	139	160	179
Blue	1.94	173	200	224
Yellow	2.16	215	250	305
Red	2.36	260	300	335

## Flow rates and Wetted diameter at 2 kg/cm<sup>2</sup>

Swivels - Wetted diameter (m) stagewise									
Nozzle color	Flow rate (l/h)	Black		Blue		Grey		Green	
		1 <sup>st</sup>	2 <sup>nd</sup>	1 <sup>st</sup>	2 <sup>nd</sup>	1 <sup>st</sup>	2 <sup>nd</sup>	1 <sup>st</sup>	2 <sup>nd</sup>
Violet	35	2.0	5.5						
Brown	50	2.0	6.5						
Grey	70			2.5	7.0				
Turquoise	90			2.5	9.0				
Green	105			3.0	9.0				
Orange	120					2.0	5.5		9.5
Black	160					2.5	6.0	2.5 - 3.5	10.0
Blue	200					2.5	6.0		10.5
Yellow	250					3.0	6.0		11.5
Red	300					3.0	7.0		12.5

## Inverted Model - Flow Rates & Wetted Diameter (m) at 2.0 kg/cm<sup>2</sup>

Swivel color	Nozzle color	Q (l/h)	D (m)
Green inverted	Violet	35	6.5
	Brown	50	7.5
	Grey	70	9.0
	Turquoise	90	10.0
	Green	105	10.0
	Orange	120	10.5
	Black	160	11.0
	Blue	200	11.5

P= Pressure; Q= Discharge; D = Diameter

\*Tested under laboratory conditions at 0.25 m height

\* 2<sup>nd</sup> Stage green swivel only for 120 - 200 lph





# 2005 Aqua Master

## Performance Table for Rainport Application

Swivel Color	Nozzle Color	Q (l/h)	D (m)	Precipitation rate (mm/h) Spacing (m)			
				3x3	4x4	5x5	6x6
Blue	Grey	70	7.0	7.8	4.4		
	Turquoise	90	9.0	10	5.6		
	Green	105	9.0	11.6	6.5		
Green	Orange	120	9.5	13.3	7.5	4.8	3.3
	Black	160	10.0	17.8	10	6.4	4.5
	Blue	200	10.5	22.3	12.6	8	5.6
	Yellow	250	11.5	27.8	15.7	10	7
	Red	300	12.5	32.9	18.5	11.8	8.2

\*Tested under laboratory conditions at 0.6 m height and 2.0 kg/cm<sup>2</sup>

P= Pressure; Q= Discharge; D = Diameter

CU < 85%	CU = 85-88%	CU = 88-92%	CU > 92%
----------	-------------	-------------	----------

## Ordering Specifications

	X	X	X
	Swivels	Housing	Nozzles, Disch. (lph)
219	3 - black (with 35 & 50 lph only) 2 - blue (with 70 & 105 lph only) 5 - green (with 120 & 300 lph only) 6 - green inverted (with 35 & 200 lph only)	1 - Female (push fit) 4 - Threaded 3/8" 6 - Quick thread	0 - brown, 50 2 - green, 105 3 - blue, 200 4 - purple, 35 5 - Orange, 120 6 - Yellow, 250 7 - Red, 300 8 - black, 160 9 - gray, 70

Example: 219548 - This code represents 2005 AquaMaster with green swivel, black nozzle and 3/8" threaded housing.

## Inverted Model - Precipitation rate (mm/h) Spacing (m)

Nozzle color	Q (l/h)	3x3	4x4	4x6	5x5
Grey	70	7.7	4.4	2.9	2.8
Turquoise	90	10	5.6	3.8	3.6
Green	105	11.7	6.6	4.4	4.2
Orange	120	14.0	7.9	5.3	5.1
Black	160	17.5	9.9	6.6	6.3

\*Tested under laboratory conditions at 1.8 m height and 2.0 kg/cm<sup>2</sup>

P= Pressure; Q= Discharge; D = Diameter

CU < 85%	CU = 85-88%	CU = 88-92%	CU > 92%
----------	-------------	-------------	----------

